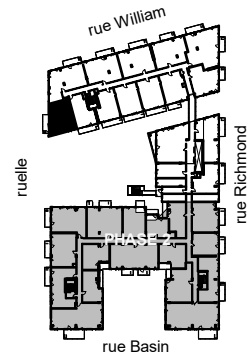


# QUARTIER GÉNÉRAL

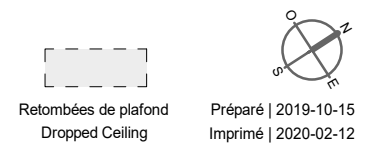
Condos Griffintown



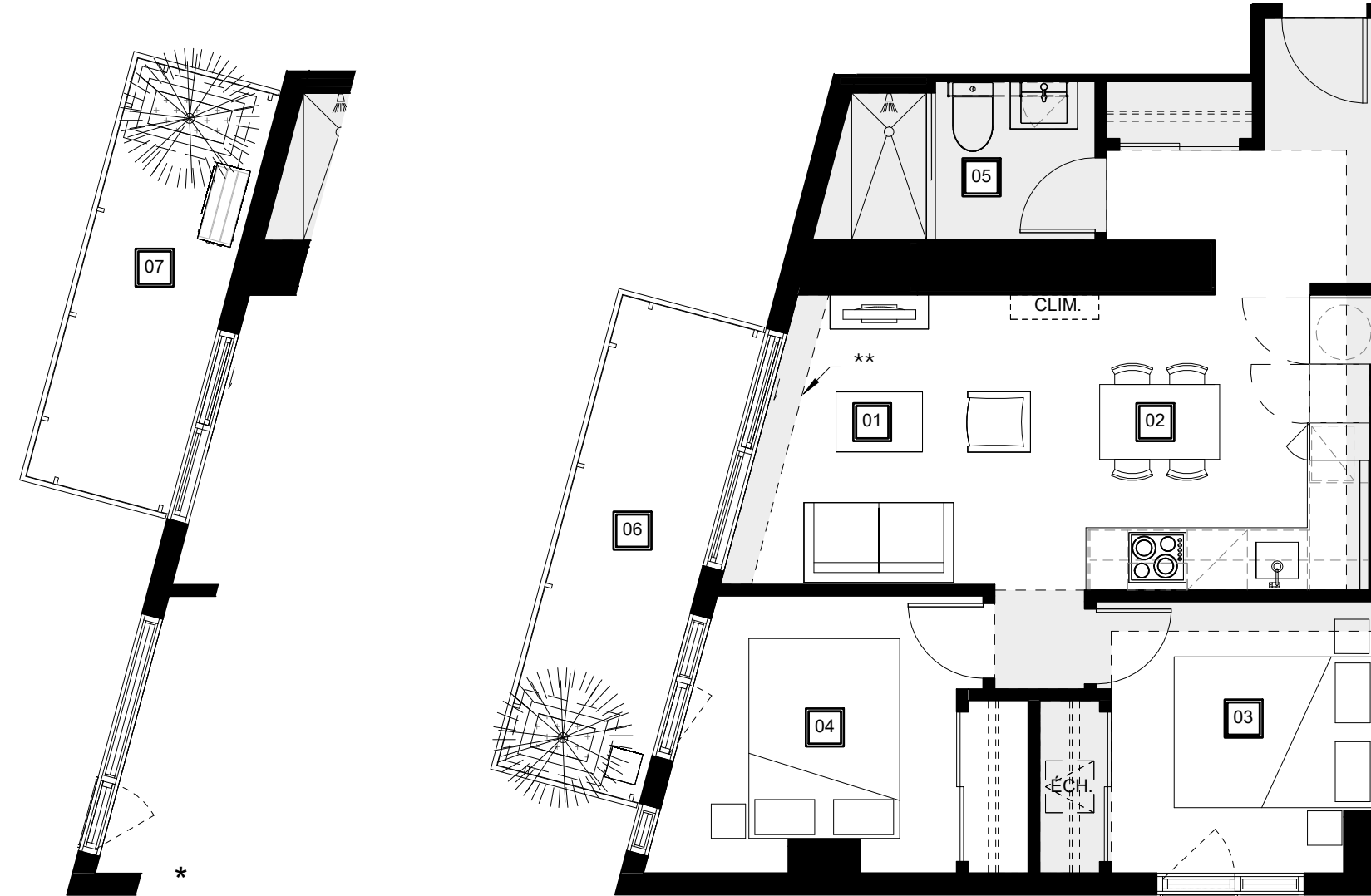
PLAN  
**D5A**

SUPERFICIE PI.CA. - AREA SQ.FT.  
**605**

UNITÉS - UNITS  
**702 - 802**



- ★ Extrait balcon et fenêtres de l'unité 702  
Balcony and windows excerpt of unit 702
- ★★ Retombée de plafond de l'unité 802 seulement  
Dropped ceiling of unit 802 only



- 01

Séjour  
Living Room  
12' - 2" / 9' - 7" x 9' - 8"
- 02

Cuisine - Salle à manger  
Kitchen - Dining Room  
9' - 6" x 9' - 10"
- 03

Chambre Principale  
Master Bedroom  
8' - 10" x 9' - 1"
- 04

Chambre 2  
2nd Bedroom  
10' - 5" / 8' - 0" x 9' - 3"
- 05

Salle de bain  
Bathroom  
9' - 5" / 8' - 1" x 5' - 4"
- 06

Balcon 802  
Balcony 802  
5' - 0" x 16' - 3"
- 07

Balcon 702  
Balcony 702  
5' - 0" x 14' - 5"

QGgriffintown.ca