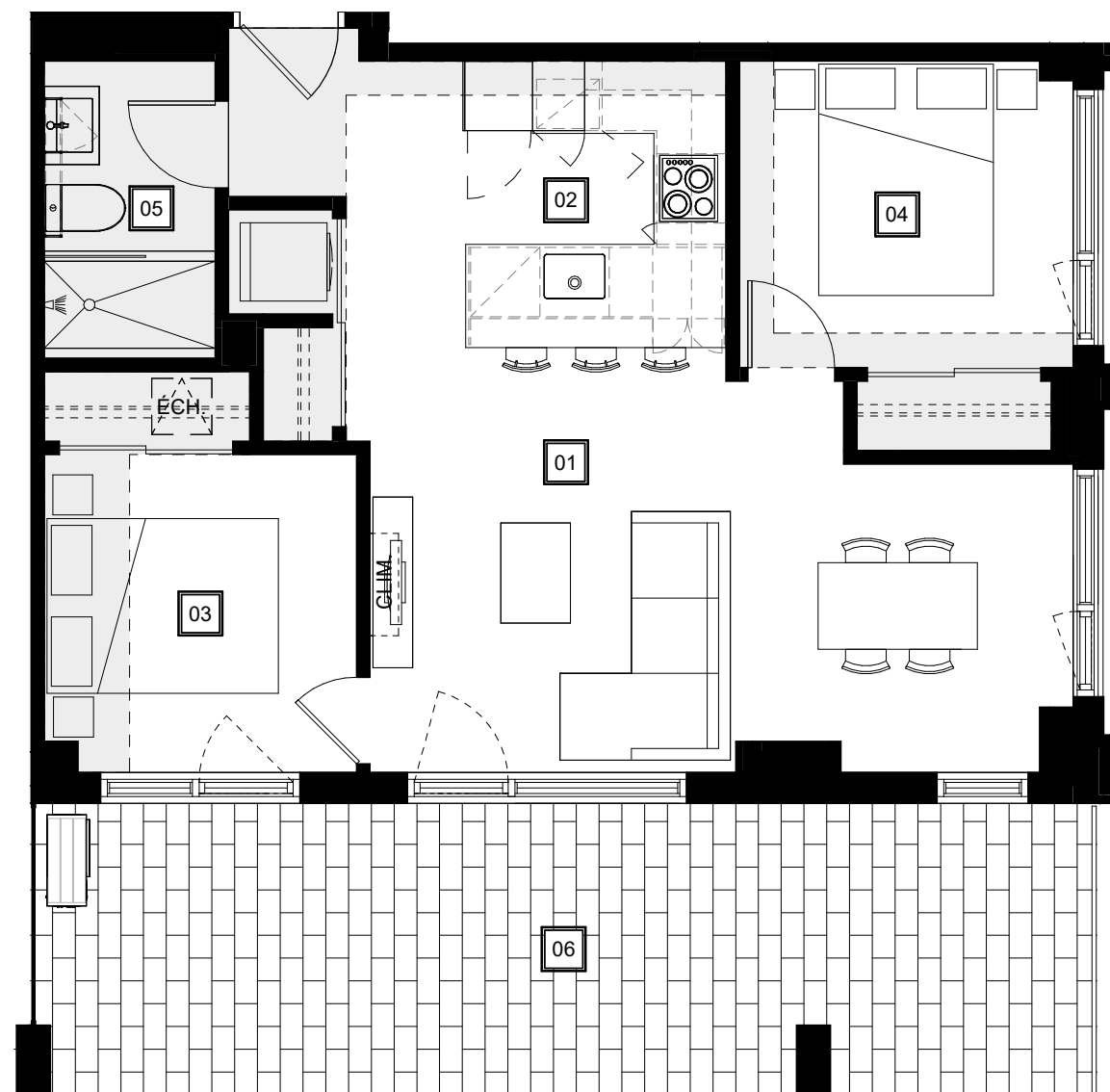


Retombées de plafond
Dropped Ceiling

Préparé | 2021-12-14
Imprimé | 2021-12-14



- | | | | | | |
|--|---|---|--|--|---|
| <div style="border: 1px solid black; width: 20px; height: 20px; margin: 0 auto; display: flex; align-items: center; justify-content: center;">01</div> <p>Séjour - Salle à manger
Living Room - Dining Room
20' - 3" / 13' - 8" X 11' - 3" / 9' - 0"</p> | <div style="border: 1px solid black; width: 20px; height: 20px; margin: 0 auto; display: flex; align-items: center; justify-content: center;">02</div> <p>Cuisine
Kitchen
7' - 7" X 7' - 5"</p> | <div style="border: 1px solid black; width: 20px; height: 20px; margin: 0 auto; display: flex; align-items: center; justify-content: center;">03</div> <p>Chambre principale
Master Bedroom
9' - 0" X 9' - 2"</p> | <div style="border: 1px solid black; width: 20px; height: 20px; margin: 0 auto; display: flex; align-items: center; justify-content: center;">04</div> <p>Chambre 2
2nd Bedroom
9' - 7" X 8' - 10"</p> | <div style="border: 1px solid black; width: 20px; height: 20px; margin: 0 auto; display: flex; align-items: center; justify-content: center;">05</div> <p>Salle de bain
Bathroom
5' - 0" X 8' - 7"</p> | <div style="border: 1px solid black; width: 20px; height: 20px; margin: 0 auto; display: flex; align-items: center; justify-content: center;">06</div> <p>Terrasse
Terrace
30' - 5" X 8' - 5"</p> |
|--|---|---|--|--|---|

Plans préliminaires sujets à changements. La superficie brute des logements n'inclut pas celle des balcons et/ou terrasses. La superficie et la dimension des plans de vente sont approximatives et peuvent varier. Les retombées de plafond pour la mécanique sont sujettes à changements. / Preliminary plans subject to modifications. The unit area excludes the balcony and/or terraces. The areas are approximate and are subject to variation. Dropped ceilings to accommodate mechanical pipes subject to modifications.

**QUARTIER
GÉNÉRAL**

TYPE
D21-2CAC

UNITÉ(S) - UNIT(S)
162

SUPERFICIE - AREA
683pi²/sq²