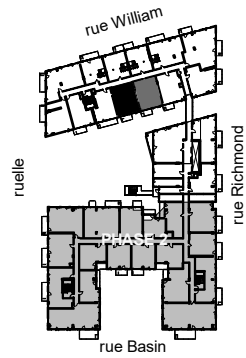


QUARTIER GÉNÉRAL

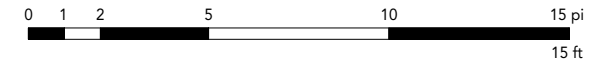
Condos Griffintown



PLAN
C1-ET7

SUPERFICIE PI.CA. - AREA SQ.FT.
543

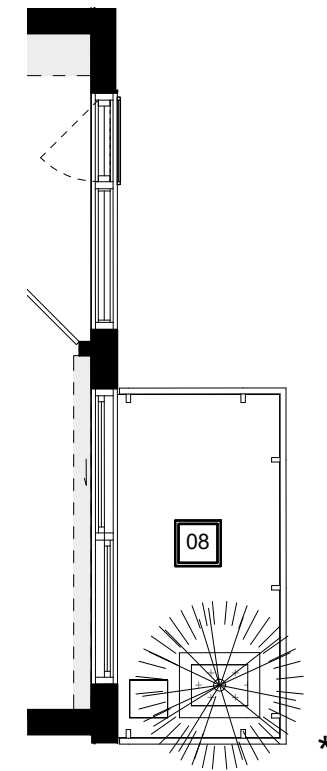
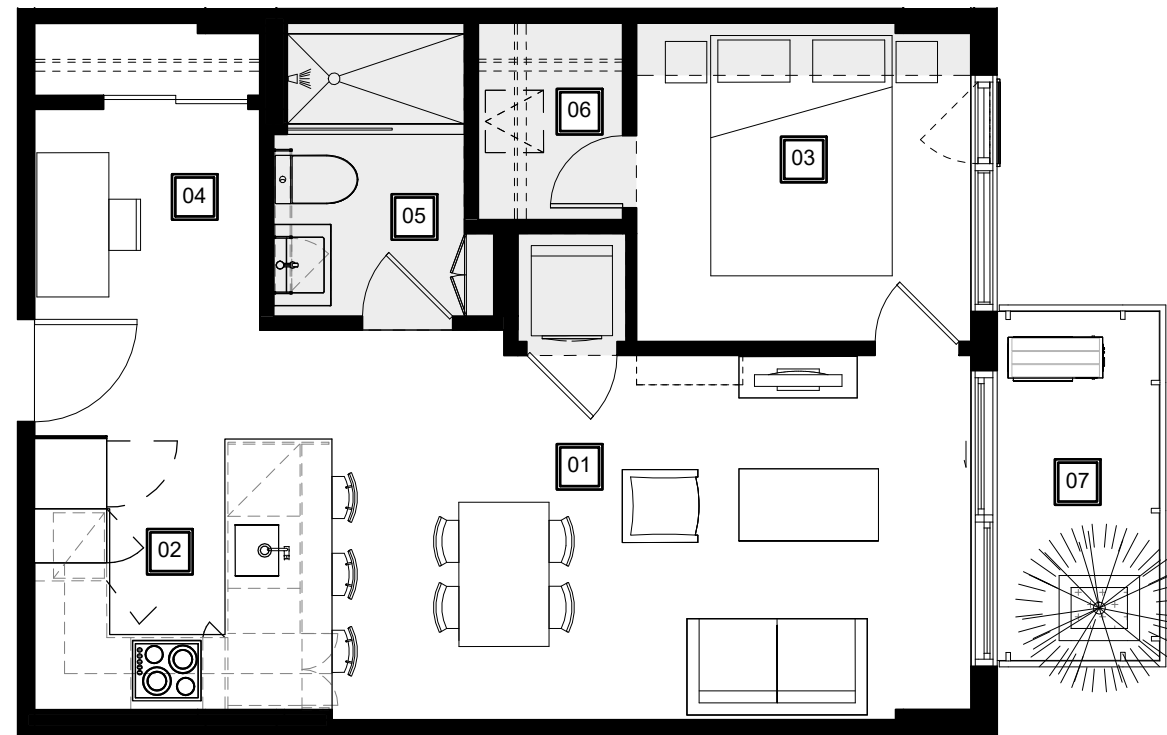
UNITÉS - UNITS
708 - 710



Retombées de plafond
Dropped Ceiling

Préparé | 01/14/20
Imprimé | 2020-02-12

* Extrait balcon et fenêtres de l'unité 710
Balcony and windows except of unit 710



01
Séjour - Salle à manger
Living Room - Dining Room
18' - 6" x 10' - 1"

02
Cuisine
Kitchen
7' - 6" x 7' - 6"

03
Chambre
Bedroom
9' - 3" x 8' - 10"

04
Bureau
Office
6' - 3" x 6' - 1"

05
Salle de bain
Bathroom
5' - 4" x 8' - 2"

06
Walk-in

07
Balcon 708
Balcony 708
4' - 6" x 9' - 8"

08
Balcon 710
Balcony 710
4' - 6" x 9' - 6"

QGgriffintown.ca