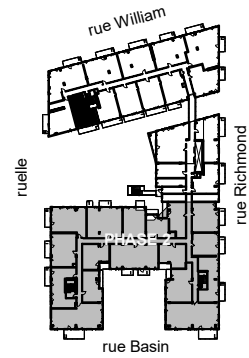


QUARTIER GÉNÉRAL

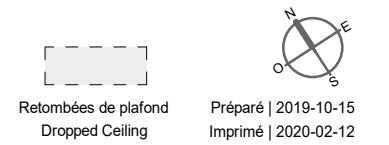
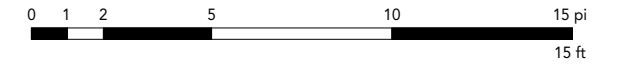
Condos Griffintown



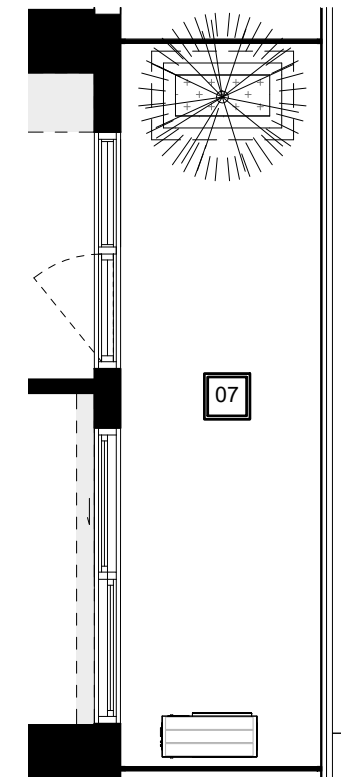
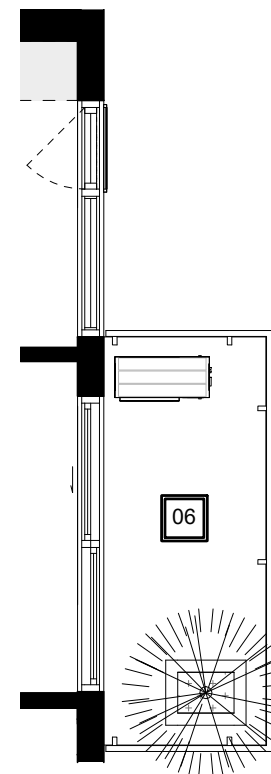
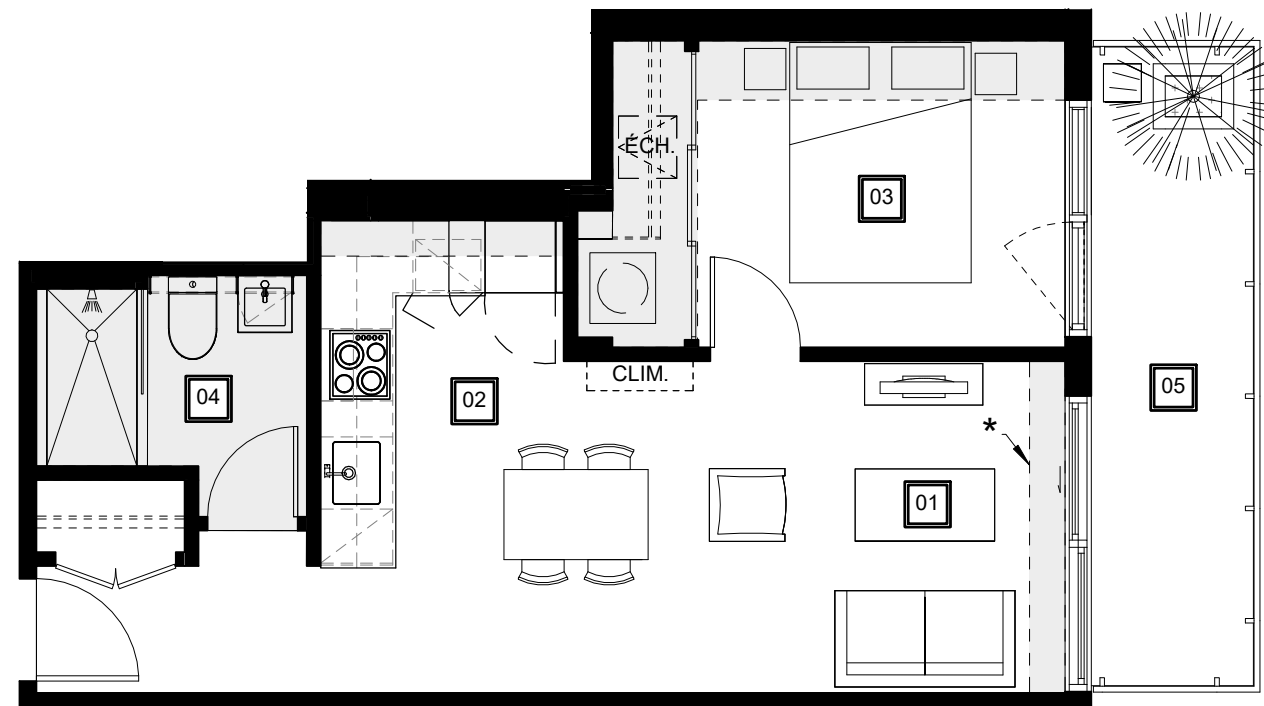
PLAN
B7

SUPERFICIE PI.CA. - AREA SQ.FT.
477

UNITÉS - UNITS
604 - 704 - 804



- ★ Retombée de plafond de l'unité 804 seulement
Dropped ceiling of unit 804 only
- ★★ Extrait balcon et fenêtres de l'unité 704
Balcony and windows except of unit 704
- ★★★ Extrait balcon et retombée de plafond de l'unité 604
Balcony and dropped ceiling except of unit 604



01
Séjour - Salle à manger
Living Room - Dining Room
14'-0" x 9'-2"

02
Cuisine
Kitchen
6'-9" x 9'-8"

03
Chambre
Bedroom
10'-2" x 8'-6"

04
Salle de bain
Bathroom
7'-6" x 5'-3"

05
Balcon 804
Balcony 804
4'-6" x 17'-9"

06
Balcon 704
Balcony 704
4'-6" x 11'-4"

07
Balcon 604
Balcony 604
5'-7" x 20'-1"

QGgriffintown.ca