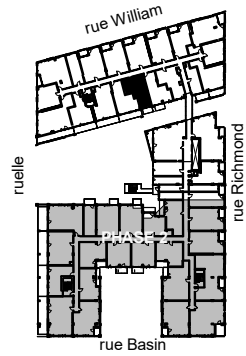


# QUARTIER GÉNÉRAL

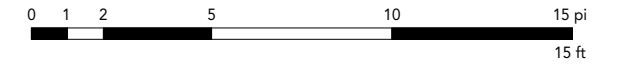
Condos Griffintown



PLAN  
**B3**

SUPERFICIE PI.CA. - AREA SQ.FT.  
**441**

UNITÉS - UNITS  
212 - 312 - 412 - 512



Retombées de plafond  
Dropped Ceiling

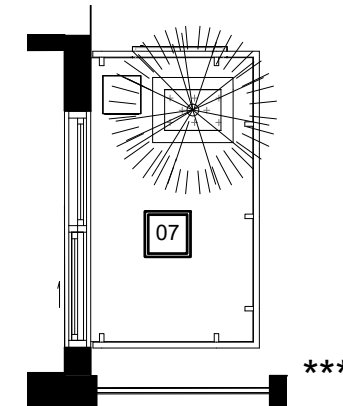
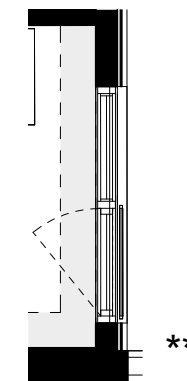
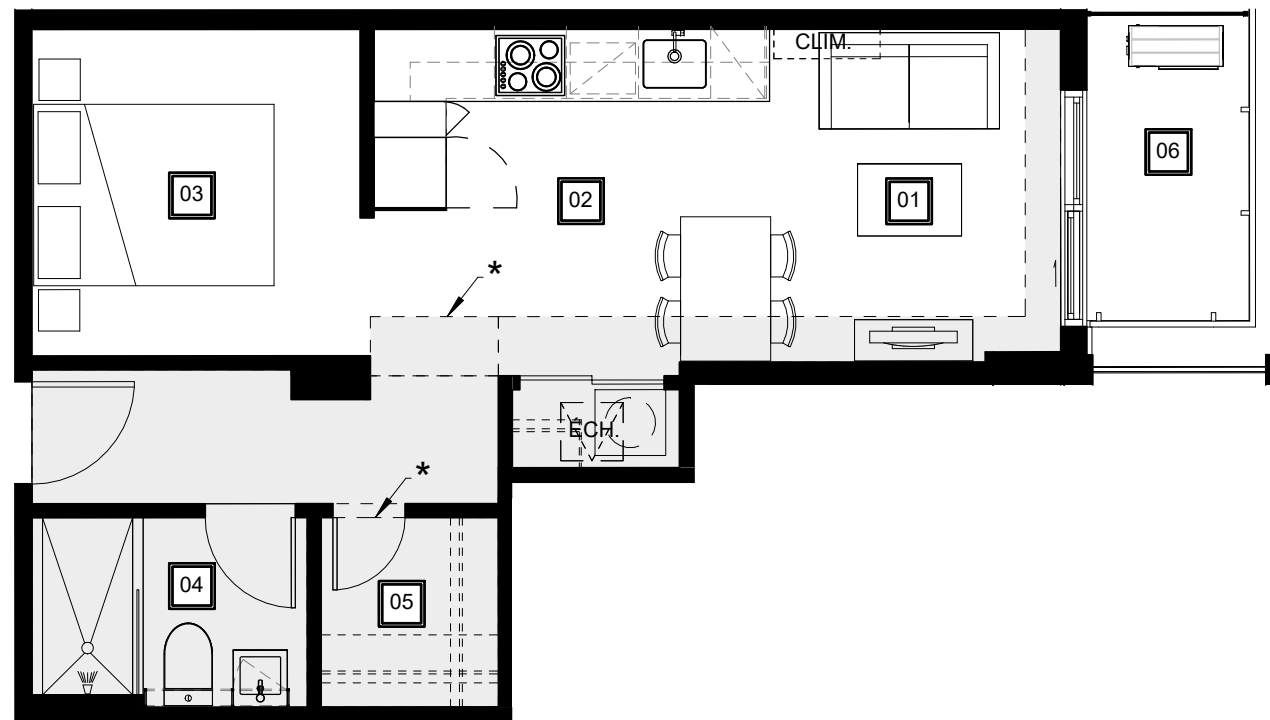


Préparé | 2019-10-15  
Imprimé | 2020-02-12

\* Retombées de plafond de l'unité 512 seulement  
Dropped ceiling of unit 512 only

\*\* Extrait fenêtre de l'unité 212  
Window excerpt of unit 212

\*\*\* Extrait balcon de l'unité 412  
Balcony excerpt of unit 412



01

Séjour - Salle à manger  
Living Room - Dining Room  
8' - 1" x 9' - 3"

02

Cuisine  
Kitchen  
11' - 0" x 9' - 3"

03

Chambre  
Bedroom  
9' - 1" x 9' - 1"

04

Salle de bain  
Bathroom  
7' - 8" x 5' - 3"

05

Walk-in  
5' - 0" x 5' - 3"

06

Balcon 312 - 512  
Balcony 312 - 512  
4' - 6" x 8' - 5"

07

Balcon 412  
Balcony 412  
4' - 6" x 7' - 10"

QGgriffintown.ca