

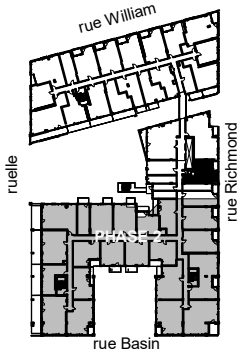
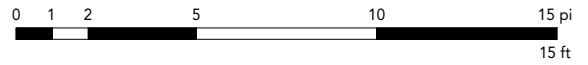
QUARTIER GÉNÉRAL

PLAN
B1

SUPERFICIE P.I.C.A. - AREA SQ.FT.
470

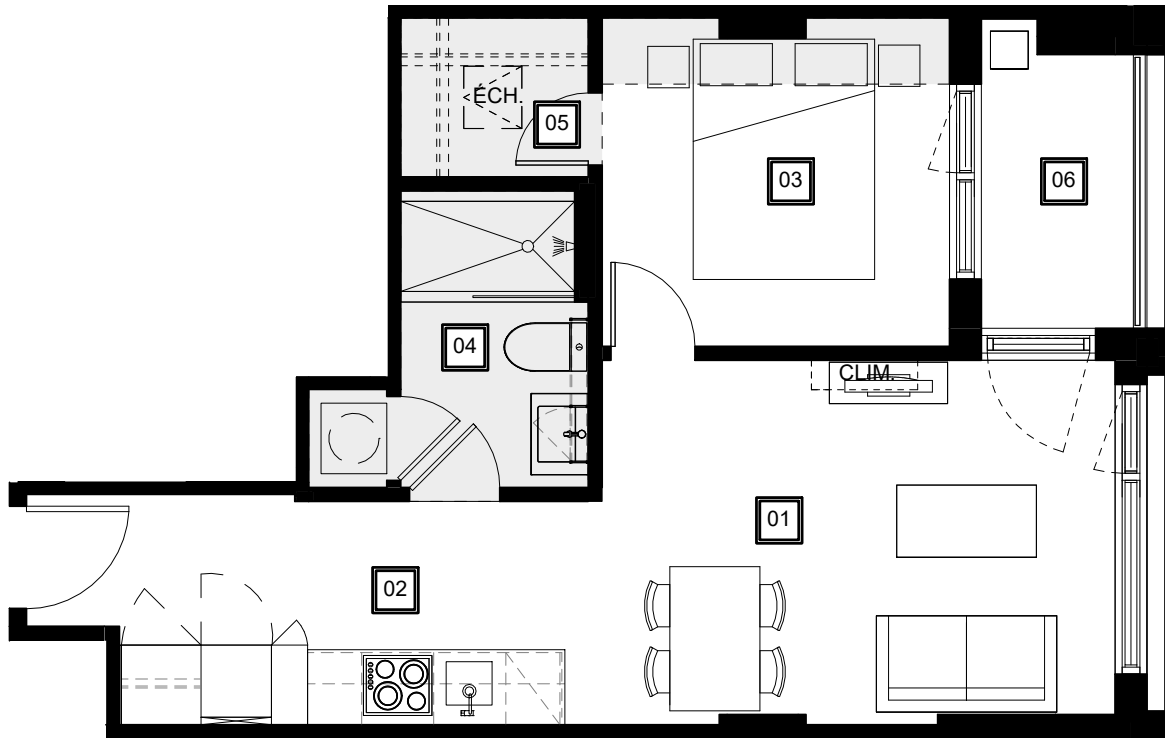
UNITÉS - UNITS
129 - 229 - 329 - 429

Condos Griffintown



Retombées de plafond
Dropped Ceiling

Préparé | 2019-10-15
Imprimé | 2020-02-12



Séjour - Salle à manger
Living Room - Dining Room
15' - 4" / 14' - 3" x 10' - 1"



Cuisine
Kitchen
12' - 4" x 2' - 3"



Chambre
Bedroom
9' - 8" x 9' - 1"



Salle de bain
Bathroom
5' - 4" x 7' - 9"



Walk-in
5' - 4" x 4' - 5"



Balcon
Balcony
4' - 3" x 7' - 7"

QGgriffintown.ca